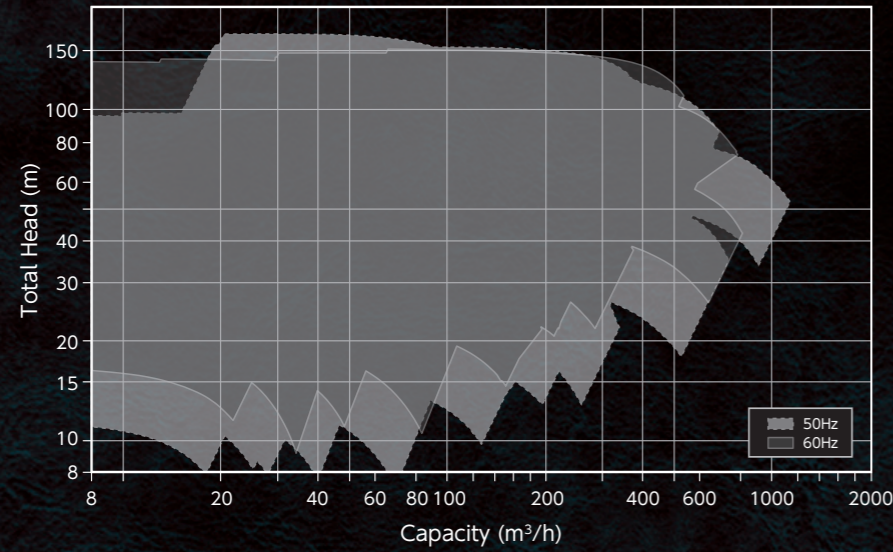
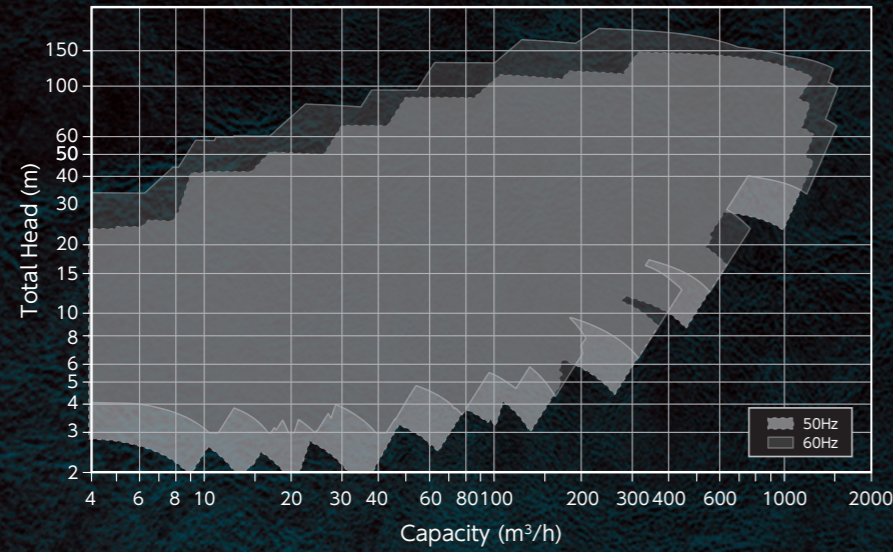


Selection chart

50Hz/60Hz 2Pole



50Hz/60Hz 4Pole



MODEL GS, GSD, GSS

Model selection available on EBARA Pump Selector:
" [ezFinder.ebara.com/](https://ezfinder.ebara.com/) "



MODEL GSO

Contact us by e-mail:
" inq-industrial@ebara.com "



Before use this product and technology, the contents should be confirmed, complied and revised in accordance with the laws and regulations of the country.
(i.e. export control laws and regulations etc.)

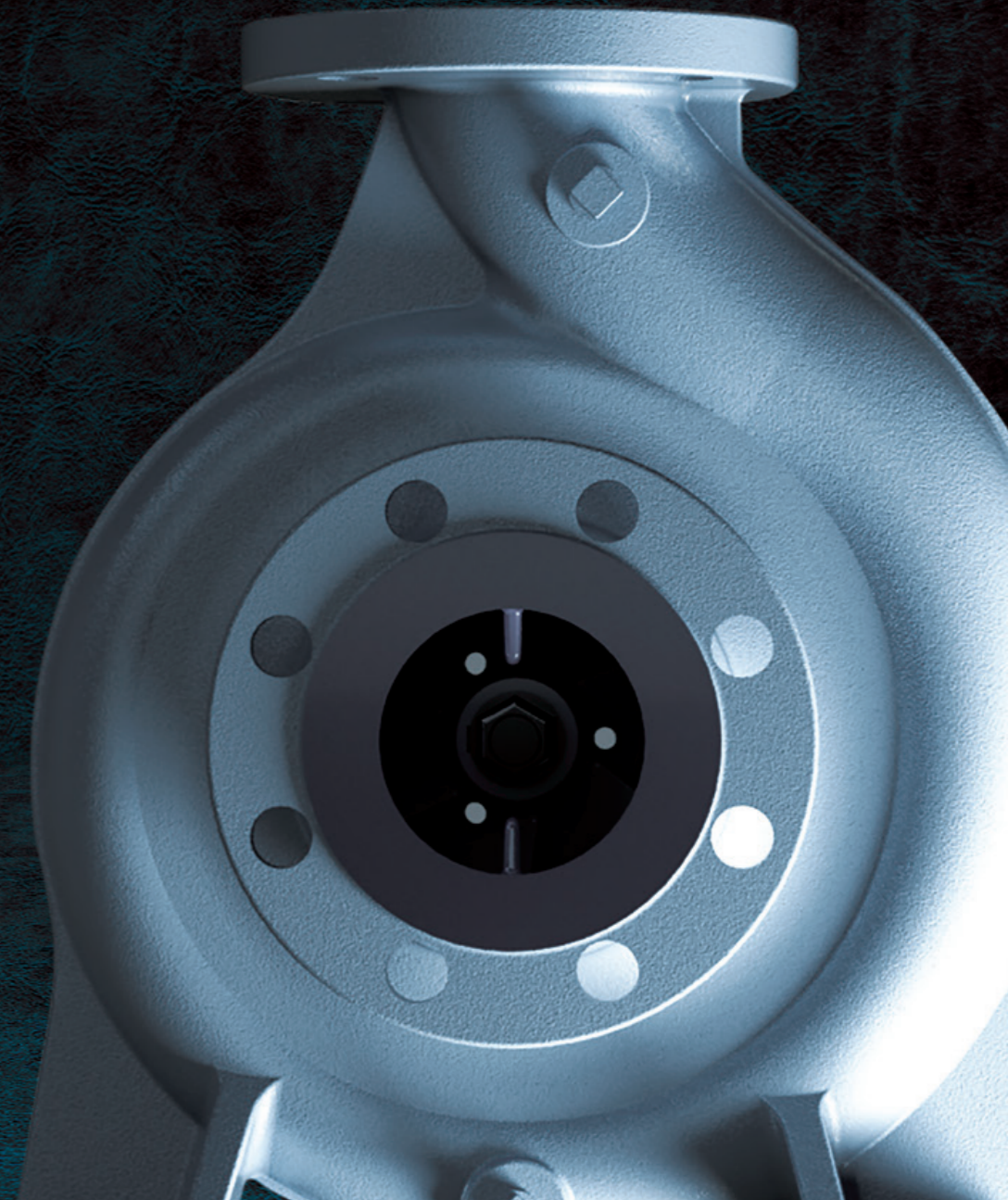
- ※1 "MODEL ●●" in this catalog is our model code
- ※2 All specifications subject to change without notice



MODEL GS Series END SUCTION VOLUTE PUMP MODEL GS, GSD, GSS, GSO

eDYNAMiQ

Eco, Dynamic and Integrated Quality



EBARA CORPORATION

11-1, Haneda Asahi-cho, Ota-ku, Tokyo, 144-8510, Japan

<https://www.ebara.co.jp/en/index.html>

26-103-E01

eDYNAMiQ

Eco, Dynamic and Integrated Quality

Ebara's Stunning Solutions for a Better World
delivering stunning solutions to every application and occasion

Ebara group has sustained the social infrastructure with fluid machinery such as pumps for more than 100 years since its established.

MODEL GS series is the global standard model that combines the knowledge and technology which Ebara has brushed up for many years as a comprehensive pump manufacture. These pumps cover the wide range between fresh water to chemical liquid. We also accomplish the reasonable and economical quality, backed by the Founding Sprits, "Passion and Dedication".

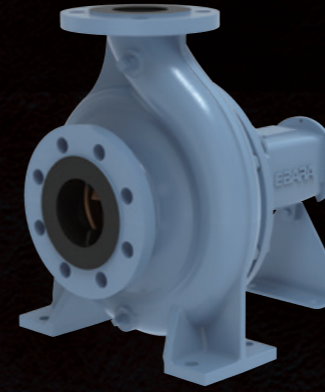
The Unique impellers developed with state-of-the-art technology can achieve the world top class efficiency, new design can establish to easy maintenance and safety, and long lifecycle.

We delivery stunning solutions to every application and occasion.

Applications

MODEL	Water Wastewater	Pressure Boosting System / Fire Fighting System / Sprinkler System	Agriculture Irrigation	Industries								
				Chemicals	Petro Chemical	Motor vehicle	Steel	Paper and pulp	Food	Semi-conductor	Metal goods	Fisheries
GS	●	●	●	●		●				●		
GSD	●	●	●	●		●				●		
GSS	●	●	●	●		●		●	●	●	●	
GSO	●	●	●	●	●	●	●	●	●	●	●	●

MODEL GS



Applicable standard: EN733
Capacities: to 1300m³/hr (50Hz), to 1500m³/hr (60Hz)
Heads: to 150m
Temperature: -10°C to 140°C

Features:

- World Top class pump efficiency achieved. (GS is classified as MEI \geq 0.7 or 0.6)
- Higher efficiency means lower energy consumption and motor output, and more compact size.
- Back pull-out structure enables disassembly and inspection without removal of suction and discharge piping.

MODEL GSD



Applicable standard: EN733
Capacities: to 700m³/hr
Heads: to 150m
Temperature: -10°C to 120°C

Features:

- Centering alignment is not required with close coupled design.
- World Top class pump efficiency achieved. (MEI \geq 0.7 or 0.6)
- Back pull-out structure enables disassembly and inspection without removal of suction and discharge piping.

MODEL GSS

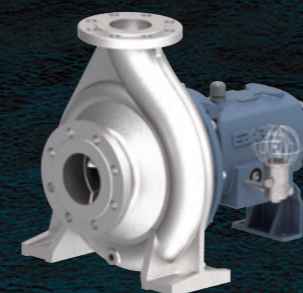


Applicable standard: EN733
Capacities: to 1200m³/hr (50Hz), to 870m³/hr (60Hz)
Heads: to 150m
Temperature: -25°C to 140°C

Features:

- Stainless steel type that can handle more kinds of liquids.
- World Top class pump efficiency achieved.
- Back pull-out structure enables disassembly and inspection without removal of suction and discharge piping.

MODEL GSO



Applicable standard: ISO2858, ISO5199
Capacities: to 1400m³/hr (50Hz, 60Hz)
Heads: to 150m (50Hz), to 140m (60Hz)
Temperature: -30°C to 200°C

Features:

- Impeller with unique reverse open shape for both clean liquid and light slurry liquid provides less axial thrust load and low seal box pressure.
- Heavy duty design to reduce vibration and shaft deflection.
- Gland cover compatible with various shaft seal types.
- Minimized maintenance cost and stock parts by high interchangeability of parts.